



USA LAB ALUMINUM RACK ASSEMBLY GUIDE





RACK PARTS LIST

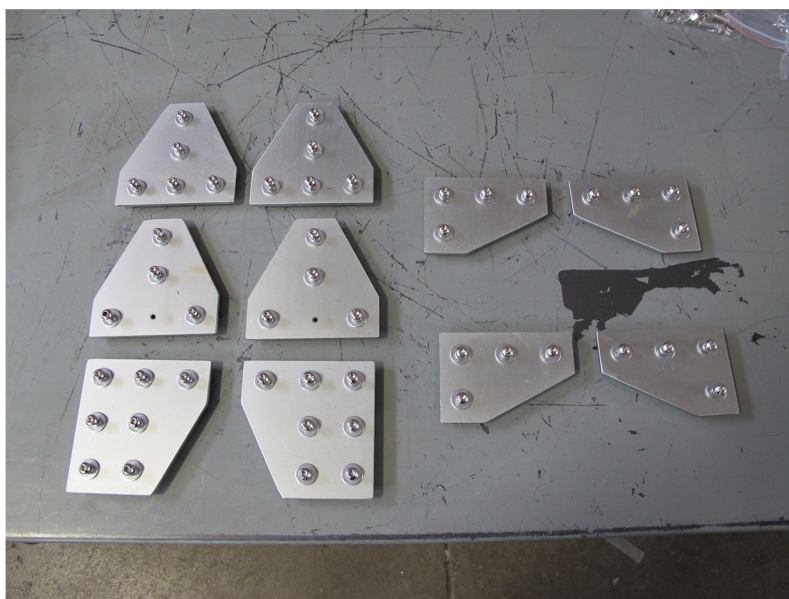
43" BAR	2x
36" BAR	7x
30" BAR	2x
ANGELED BAR	4x
7 HOLE BRACKET	2x
5 HOLE BRACKET	4x
4 HOLE BRACKET	4x
SUPPORT BRACKET	8x
2" SCREW	4x
1" SCREW	50x
1/2" SCREW	20x
T-BOLT	16x
NUT	16x
T-NUT	78x
WASHER	62x
SPLIT-WASHER	62x
CASTER	4x
END CAP	6x

**PLEASE DON'T HESITATE TO CONTACT US WITH ANY QUESTIONS,
CONCERNS OR ISSUES. YOU CAN CALL US AT 734-855-4890 OR
EMAIL US SALES@USALABEQUIPMENT.COM**

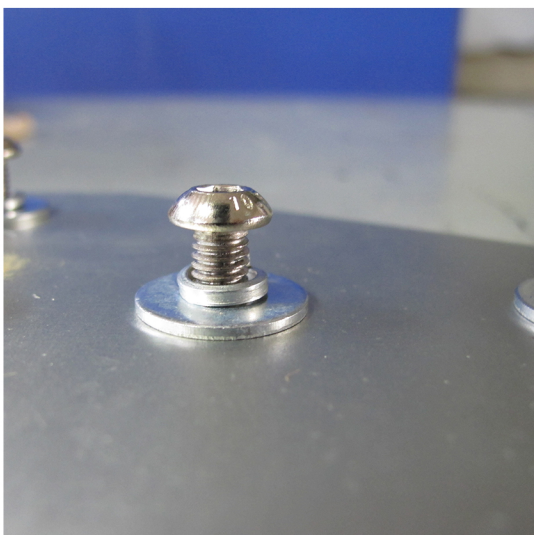


USA LAB ALUMINUM RACK ASSEMBLY GUIDE

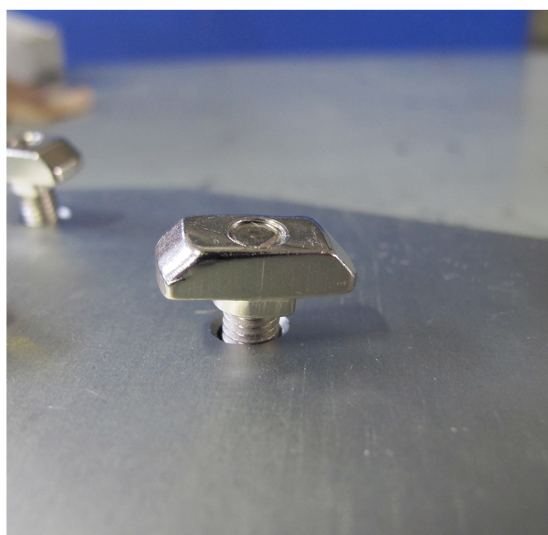
STEP 1: Pre-stage all brackets with 1" screws, washers, split-washers, and T-nuts.



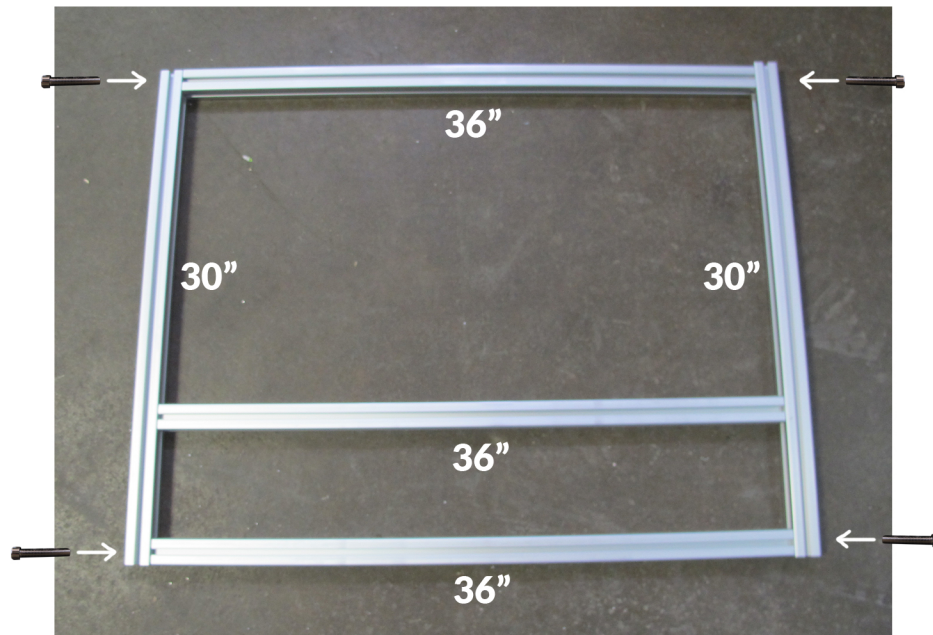
TOP SIDE



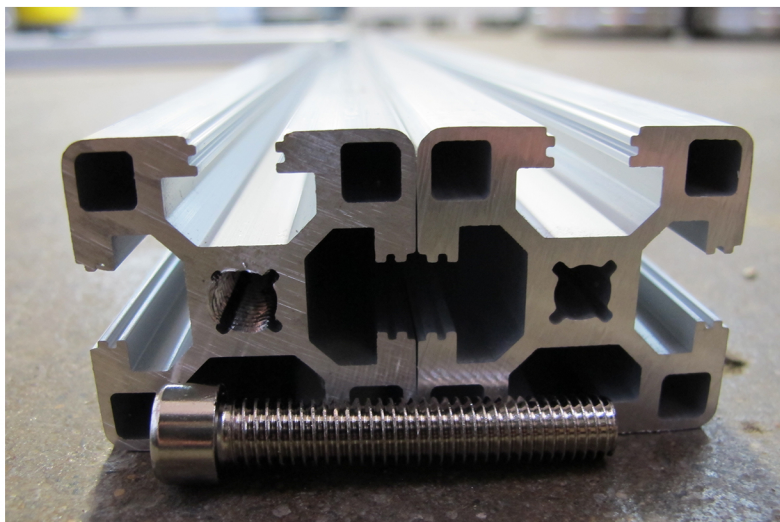
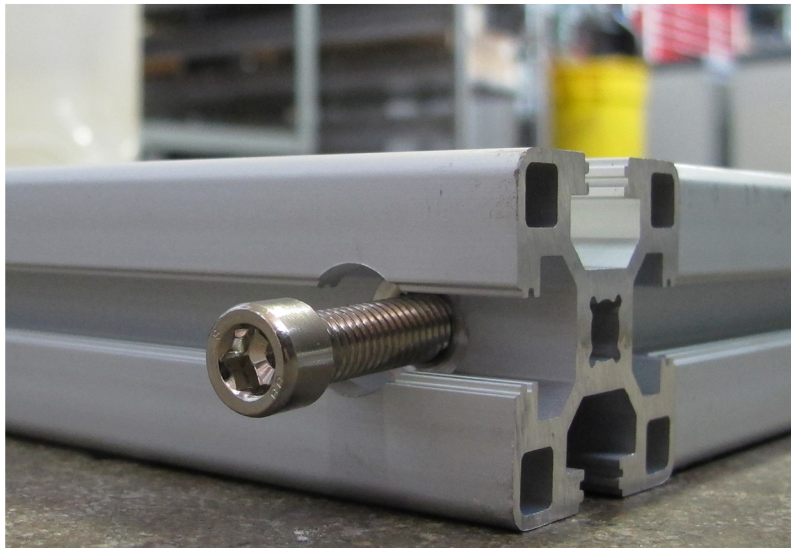
BOTTOM SIDE



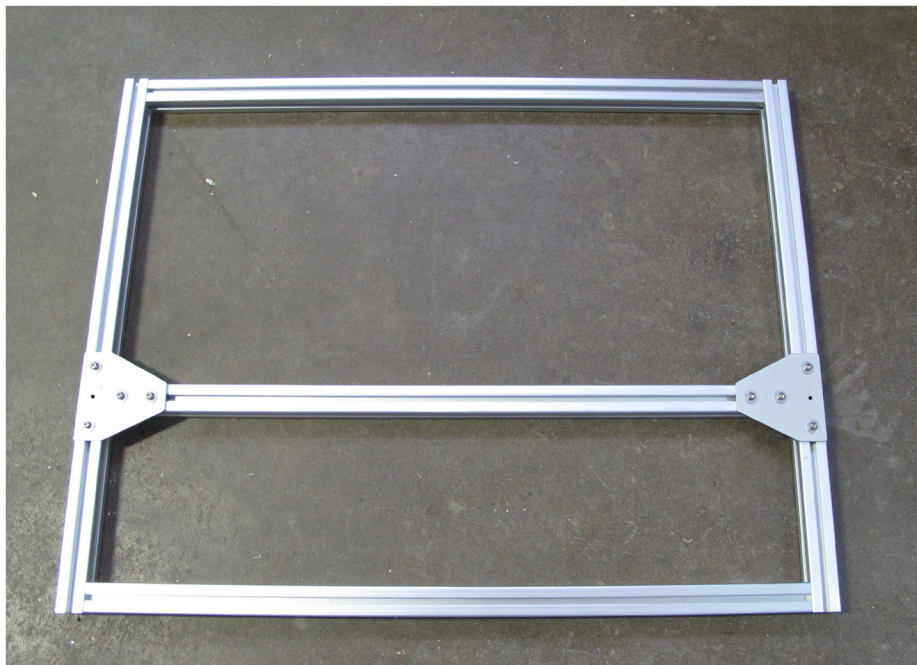
STEP 2: Pre-stage bottom frame. Insert 4x 2" screws into each corner.



Notice that the top and bottom 36\" bars have threaded ends.

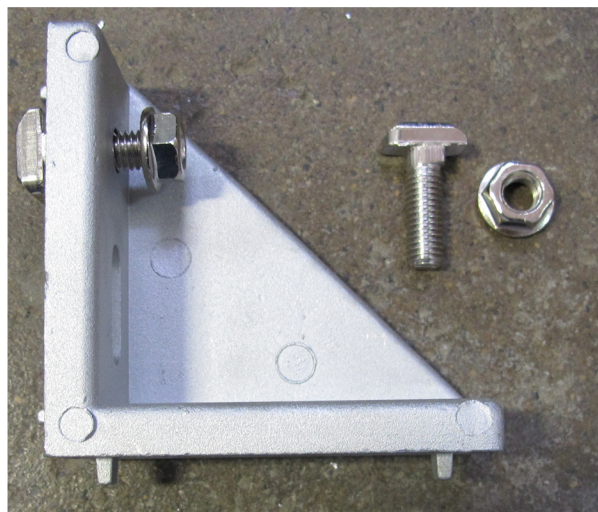
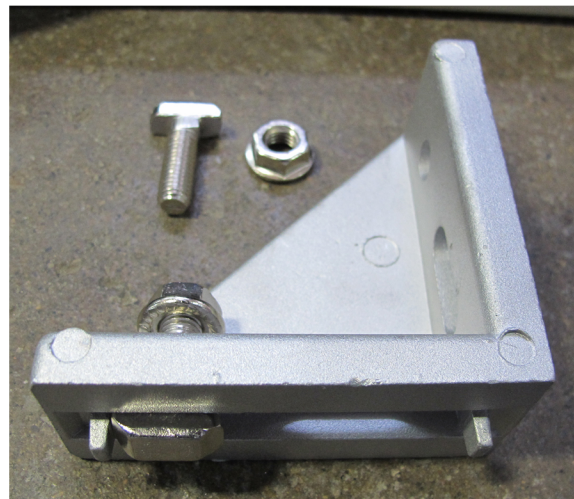
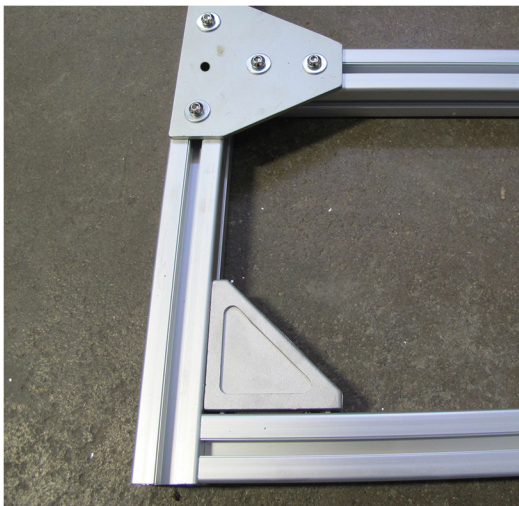


STEP 3: Attach 5 hole bracket on each side of middle bar frame.



Disclaimer: The frame is upside down while installing 5 hole brackets.

STEP 4: Insert support bracket on each of the four corners. Each bracket gets 2x T-Bolts and 2x nuts.



STEP 5: Align your center bar 2" from support bracket and 5 hole bracket.



STEP 6: Attach 5 hole bracket on both sides and attach both 43" upright bars to 5 hole brackets. Attach angled bars to upright bars with 1/2" screws and T-nuts.



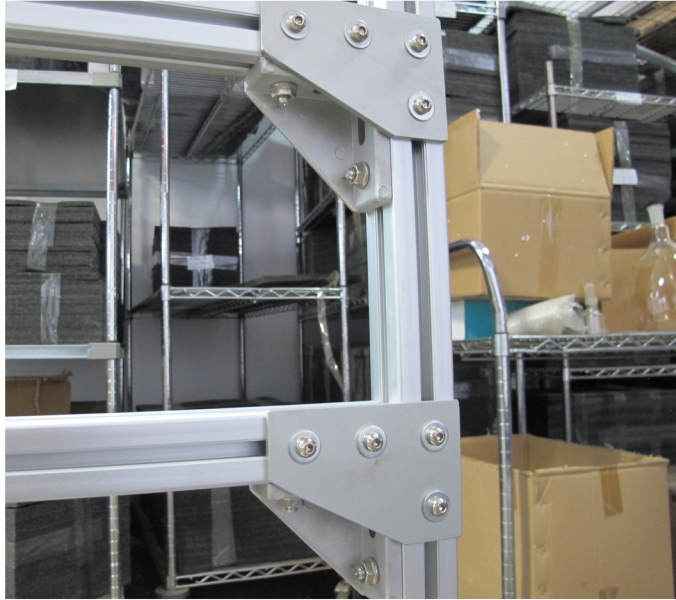
STEP 7: Attach 7 hole brackets to the tops of the 43" upright bars. Space out remaining brackets 6" from each other.



STEP 8: Attach remaining 36" bars to remaining brackets.



STEP 9: Attach remaining support brackets to underside of bottom two 36" bars with 2x T-bolts and 2x nuts per bracket.



STEP 10: Each caster gets 3x split rings, 3x washers, 3x 1/2" screws, and 3x T-nuts. Pre-Install hardware onto casters.

