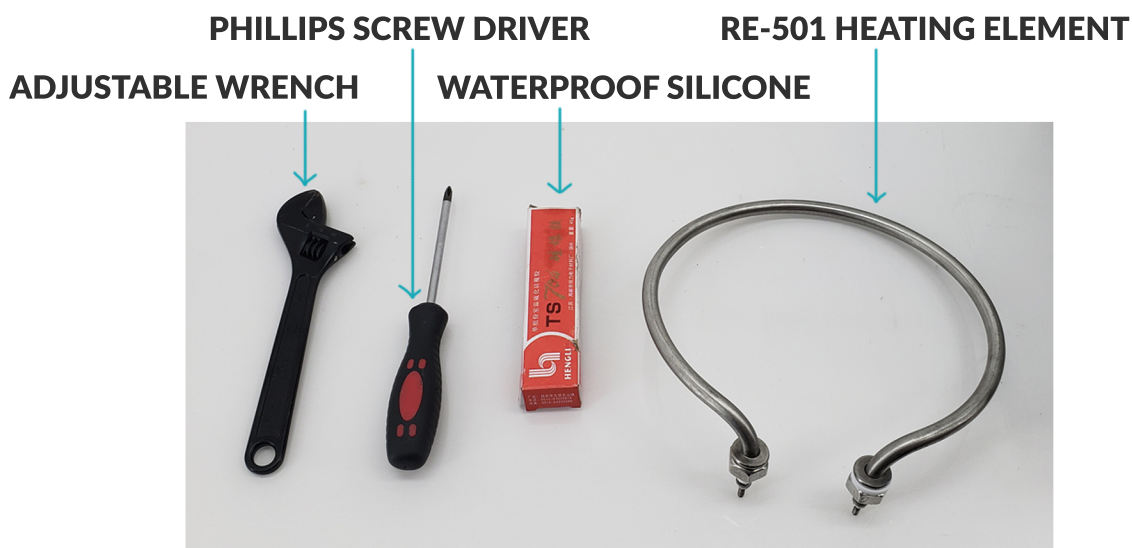




# RE-501 ROTARY EVAPORATOR

## HEATING ELEMENT REPLACEMENT GUIDE

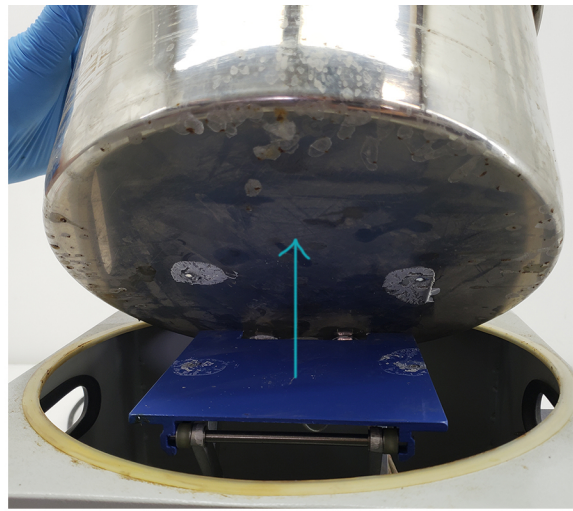
### TOOLS & PARTS NEEDED:



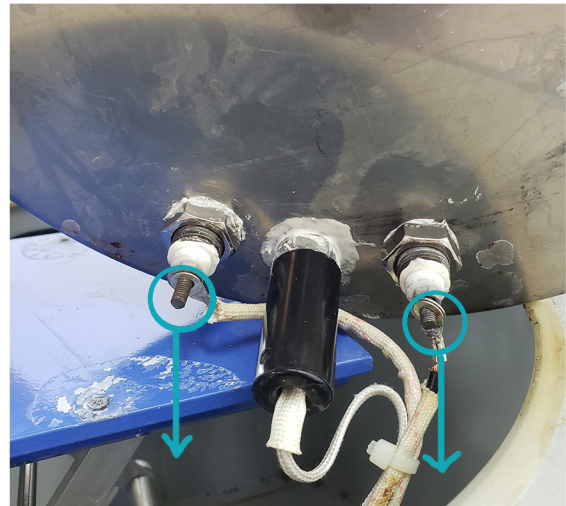
**STEP 1:** Raise the bath all the way up until it stops.



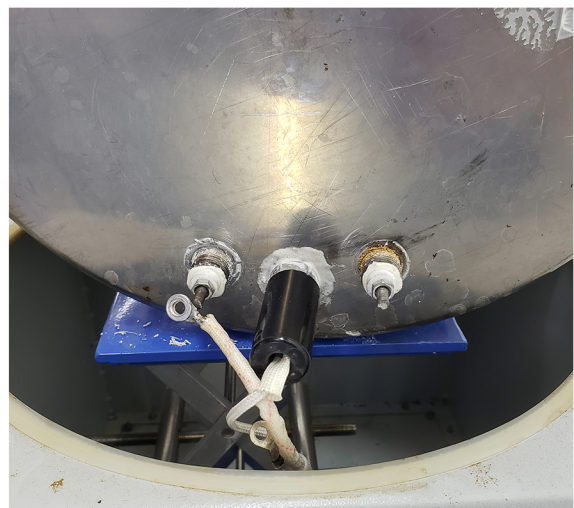
**STEP 2:** Remove the two screws located at the bottom of the bath reservoir. Once removed, the bath will now be movable from the jack.



**STEP 3:** Remove the first set of nuts and washers from both sides of the heating element. You can then remove the crimped wires.



**STEP 4:** Once the crimped wires are removed, you can then remove the washers and begin to remove the other set of nuts on both sides of the heating element.

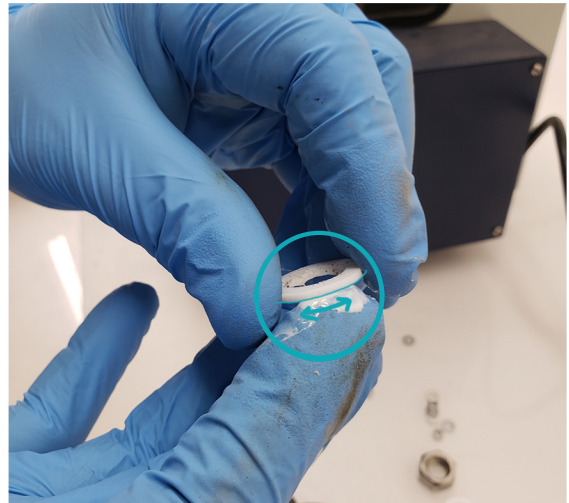
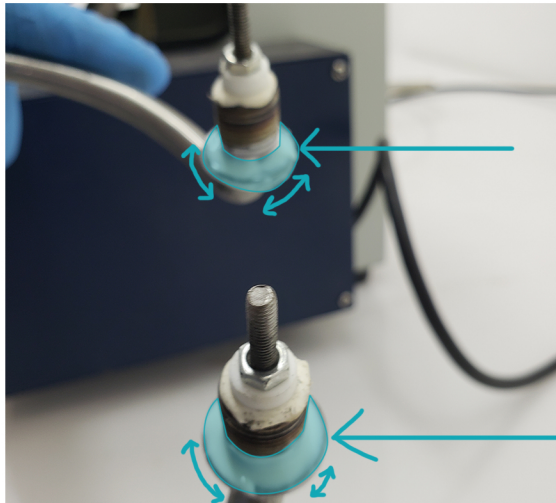




**STEP 5:** Remove all nuts and washers from the new heating element.



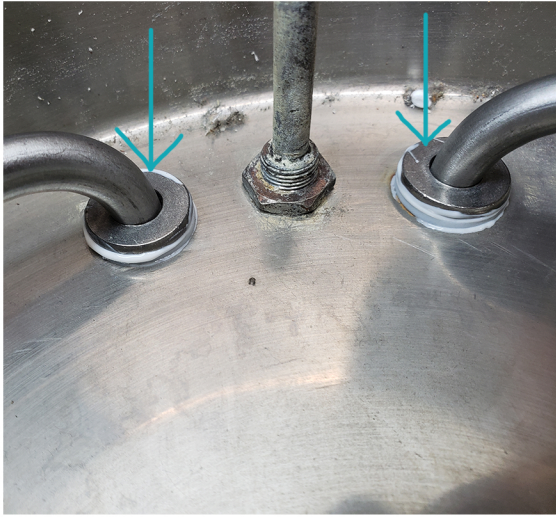
**STEP 6:** Apply water proof silicone to both the heating element underside base rings as well as to one side of both of the white washers



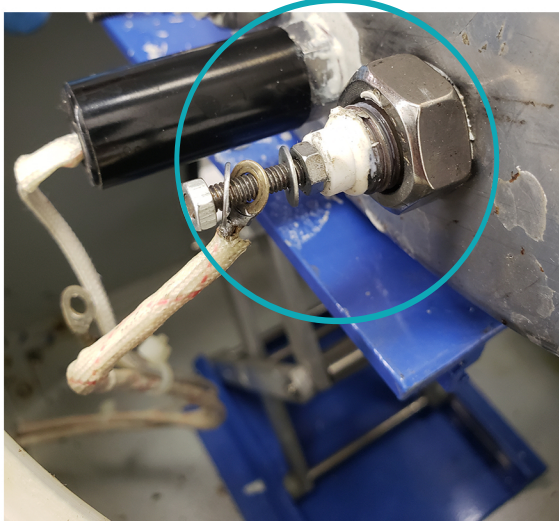
**STEP 7:** Place the white washer, dry side down onto the already siliconed heating element underside base rings.



**STEP 8:** Press the heating elements firmly into the bath holes until fully seated.



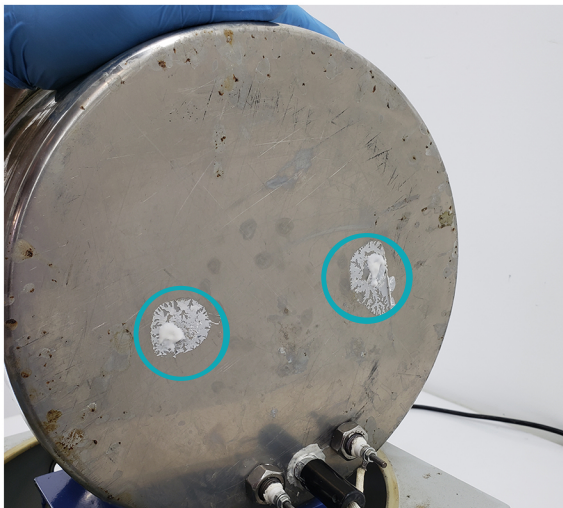
**STEP 9:** Reconnect nuts, washers and crimped wire in the reverse order from removal. The short crimped wire goes to the right connection, the long crimped wire goes to the left connection.



### Order For Re-installtion:

Large Nut >  
Small Washer>  
Crimped Wire>  
Small Washer>  
Small Nut.

**STEP 10:** Place water proof silicone to the underside of the bath where the two screw holes are located.





**STEP 11:** Seat the bath back into place on the lab jack and align the holes. Some silicone should be coming through each hole. Re-install the screws for a tight seal.



**\*\*\*WAIT FOR THE SILICONE TO DRY BEFORE USE!\*\*\***



If you have any questions or concerns, please send us an email or give us a call at **734-855-4890** or [sales@usalabequipment.com](mailto:sales@usalabequipment.com)

**THANK YOU!**