

UC-5/10 or HC-5/10

Pump Replacement Guide

IMPORTANT! Please unplug and empty the chiller completely before replacement.

Tools required or optional:

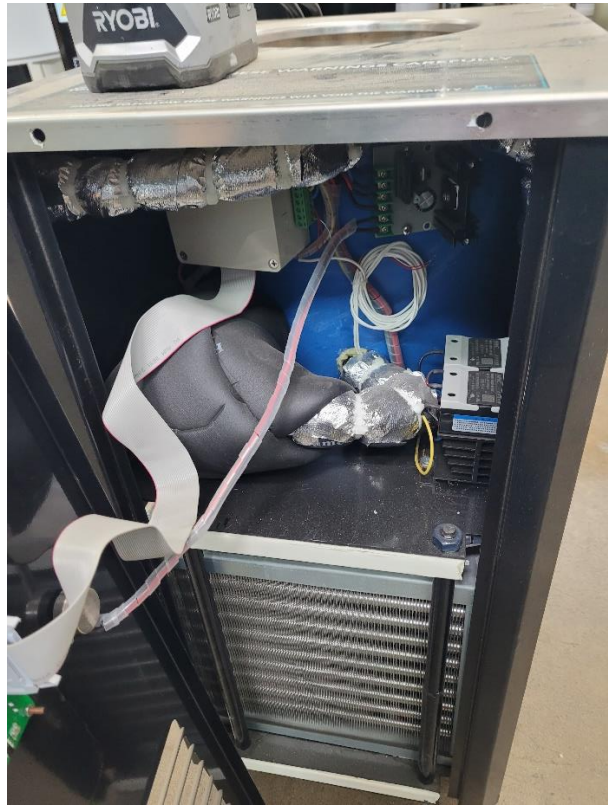
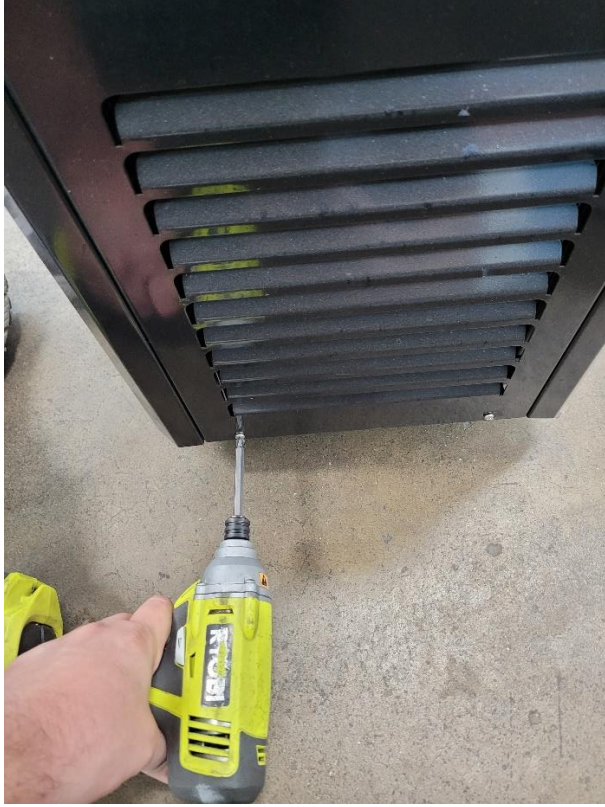


Required: Snips, zip-ties, 4mm ball end Allen wrench, Flat driver, Adjustable wrench, Phillips driver, Needle nose pliers, Spray adhesive.

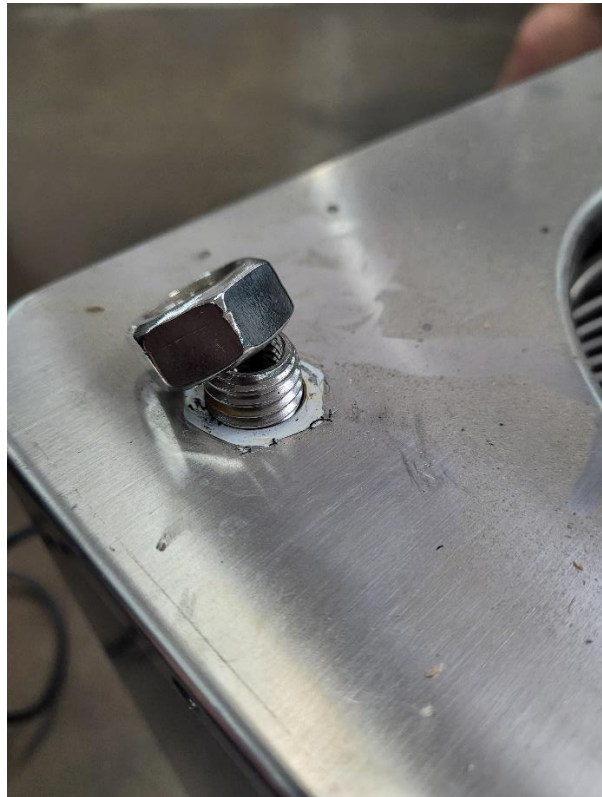
Optional: Spare silicone tubing, Knife, 10mm wrench, Mini adjustable wrench, Drill or low torque impact drill, Foil/metal tape.

Step 1 | Remove the front panel [4 screws]

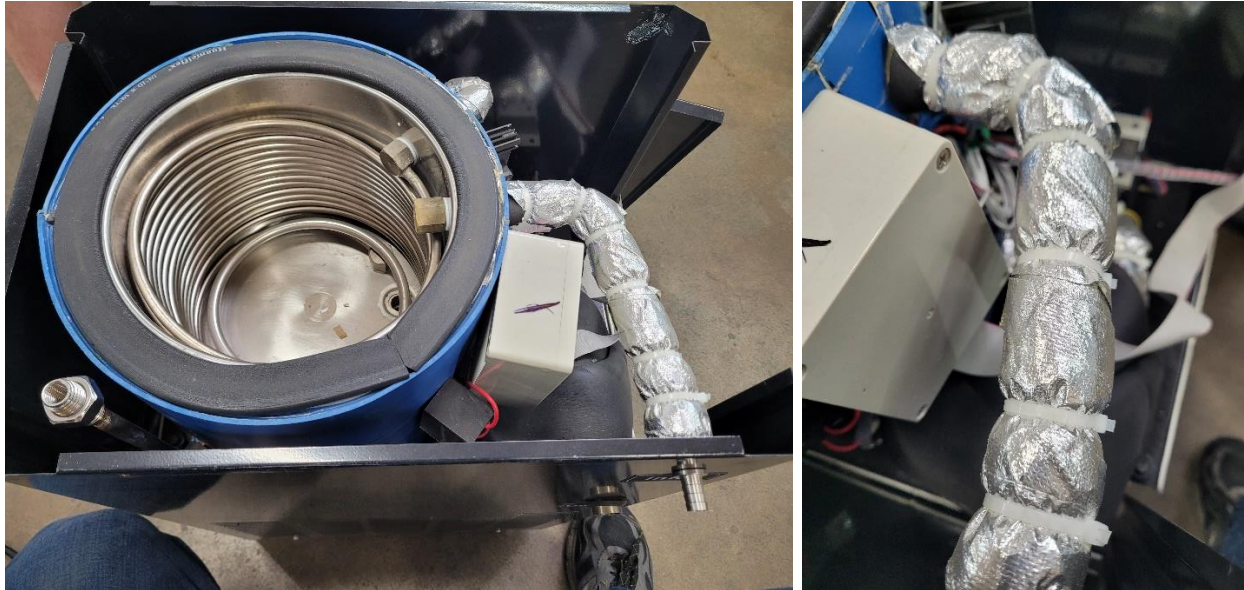




Step 2 | Remove top panel [6 additional screws + 1 large nut]



Step 3 | Remove inlet line on side panel [Remove 2-3 zip-ties, pull back insulation]



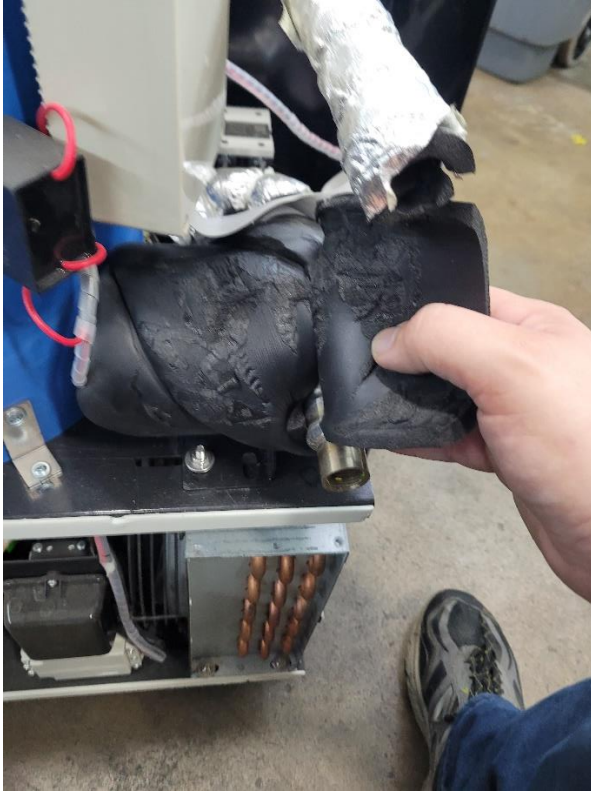
Step 4 | Loosen the hose clamp and carefully remove the tube from the barb
[There are additional steps at the end of this guide in case you rip the tube]



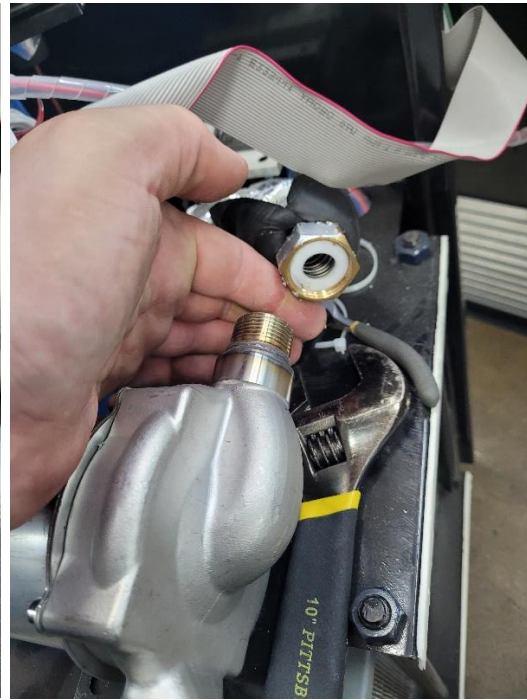
Step 5 | Remove the pump side panel [2 bottom screws]



Step 6 | Carefully remove the wrap on the pump [Remember how it is wrapped]

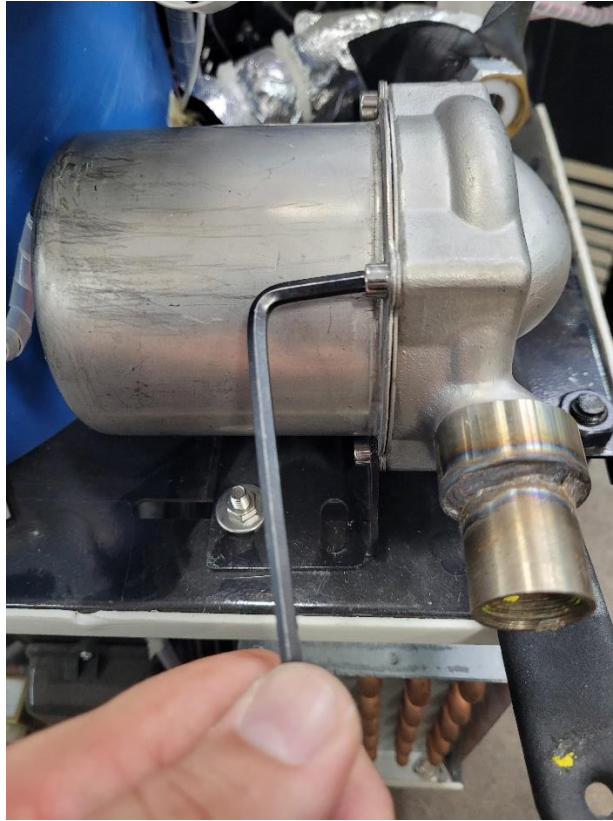


Step 7 | Cut 2-3 zip-ties on the pump inlet insulation [Just like the tube in step 3]

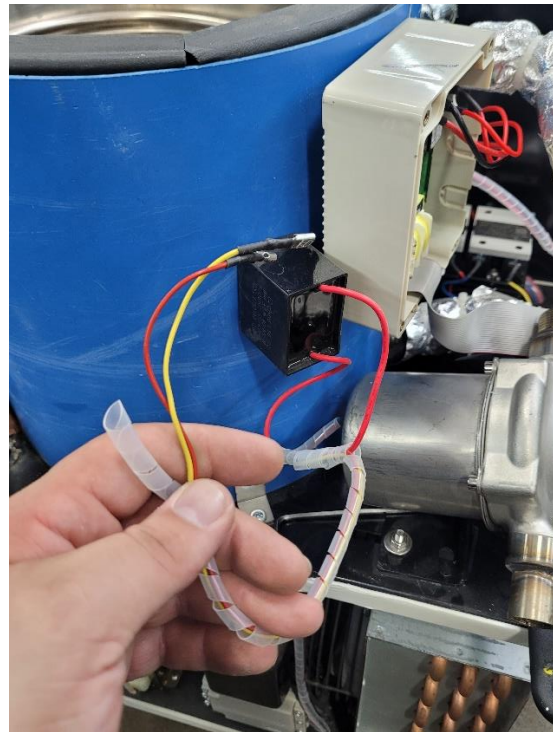
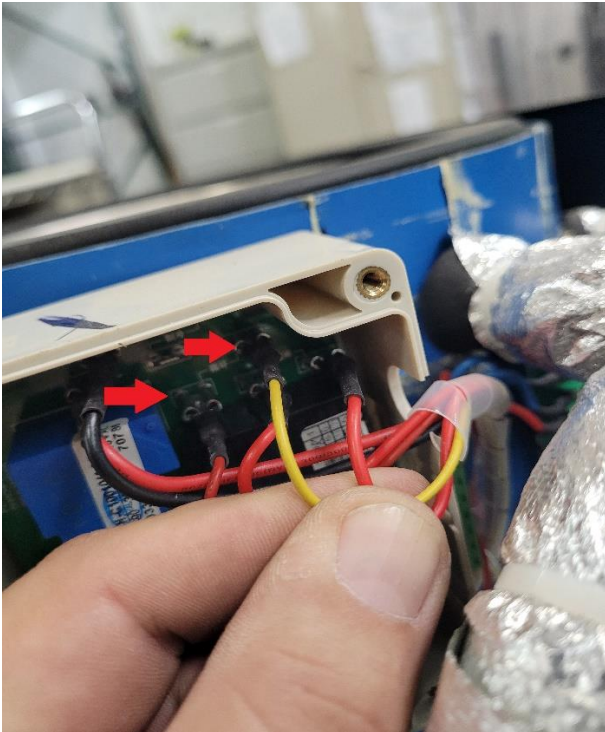


Do not lose the white O-ring

Step 8 | Remove the lower two 4mm hex head bolts [Not the upper bolt]



Step 9 | Remove the wiring to the pump [Start at the power box]



Step 10 | Remove the capacitor from the tank wall and remove the pump



Step 11 | Remove the housing from the pump and impeller [The replacement is the incorrect size and is only used to protect the part during shipping]



Step 12 | Install the factory housing on the new pump and impeller.

[Reverse removal process to reinstall the pump]

Replace cut zip ties on insulation areas.

When re-wrapping the insulation onto the pump. Use spray adhesive on the end to re-bond it.

Ripped Tube Replacement Instructions

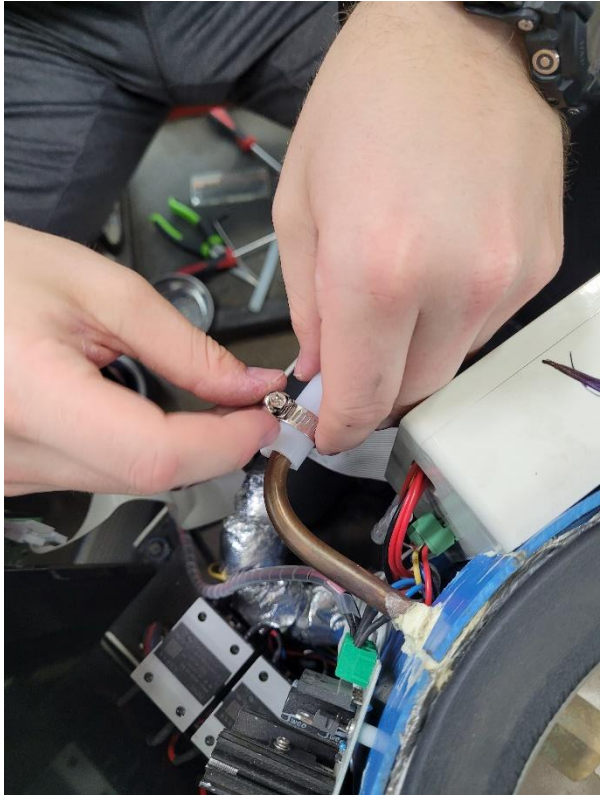
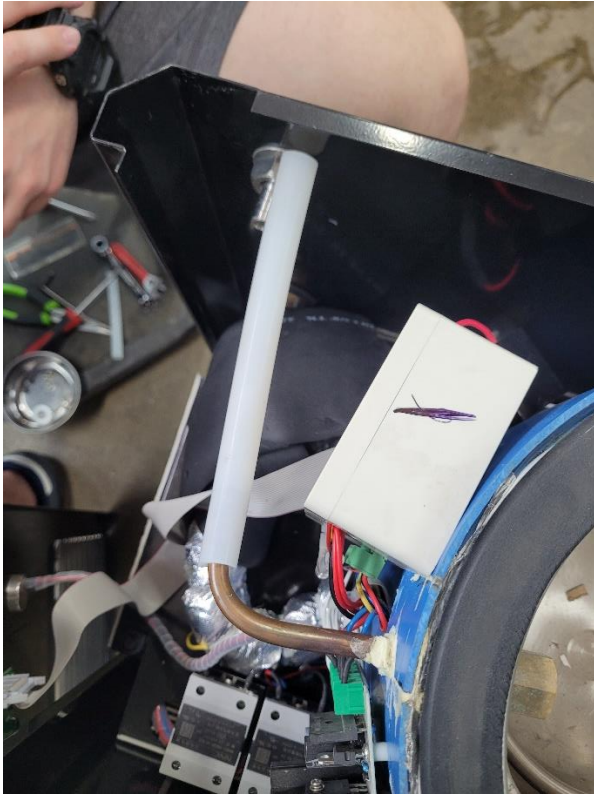
If Step 4 resulted in a damaged tube, follow below during reinstall.

Part 1 | Cut remaining zip ties and remove the insulation

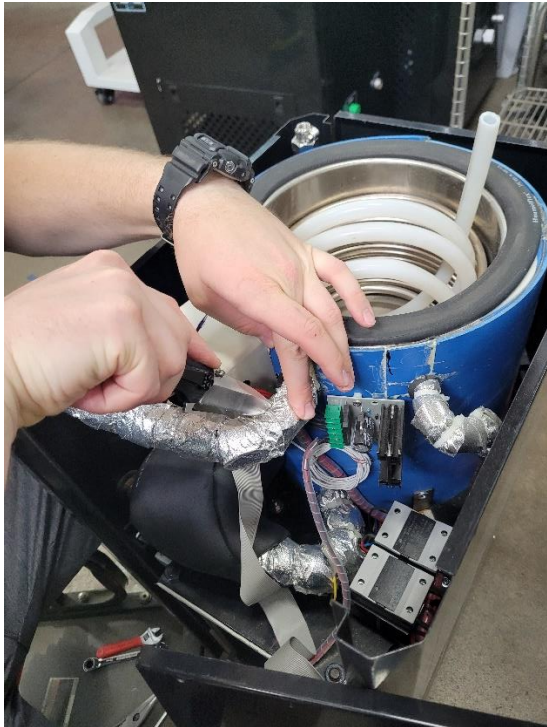
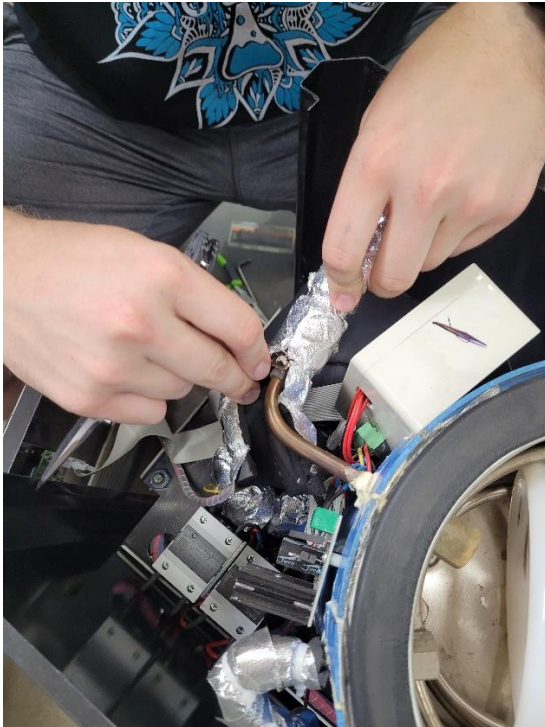


Part 2 | Remove the hose clamp and the damaged tube

Part 3 | Add new hose section and tighten hose clamp



Part 4 | Slip on insulation if possible [If needed cut lengthwise]



Part 5 | Push other end of hose onto the barb and reinstall hose clamp



Part 6 | Tape cut insulation areas and re-zip-tie





Now you can continue the reinstallation process from steps 3 to 1
If you need any help with the repair or have any questions. Please send
me an email dan@usalab.com

Or give us a call at 734-855-4890 M-F 10a-6p EST