



# RE-501 ROTARY EVAPORATOR BATH PROBE REPLACEMENT GUIDE

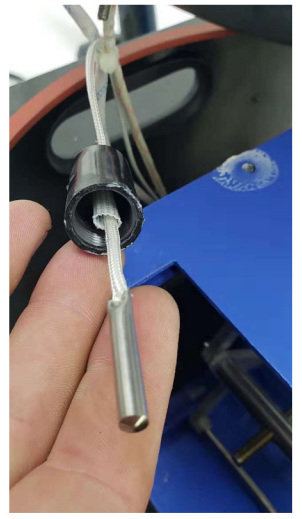
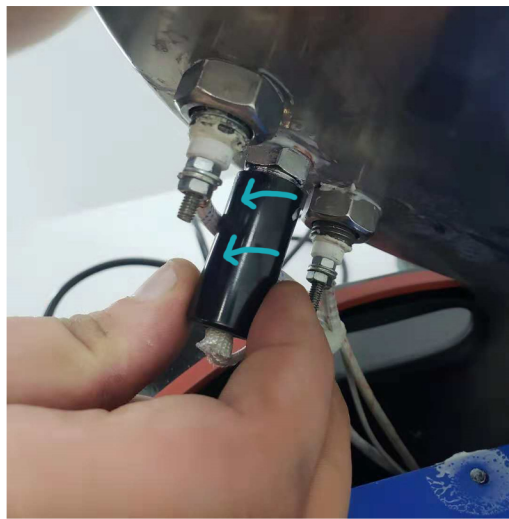
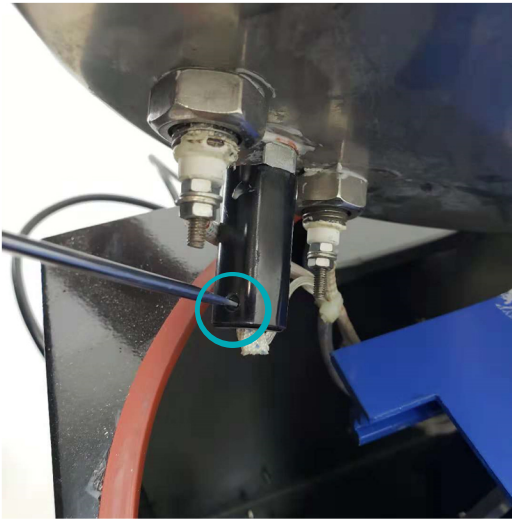
**STEP 1:** Lift the bath jack all the way up so the bath is above the housing.



**STEP 2:** Remove the two screws in the evaporator bath and lift up the bath housing. Be careful to not pull too hard due to internals and wiring underneath.



**STEP 3:** Remove the set screw from the probe housing underneath the bath. You can then unscrew the probe housing from the bath and pull out the probe.



**STEP 4:** Remove the top probe cover with a 17mm socket. You may need to hold the underside of the probe cover with a wrench to provide leverage. Once unscrewed, you can remove the probe cover.



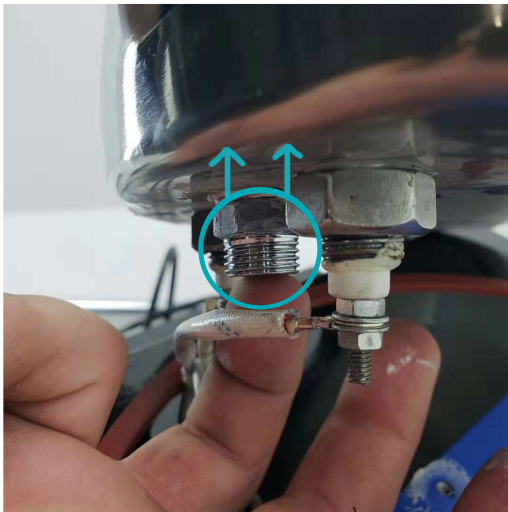
**STEP 5:** Grab the new probe cover and apply silicone around the copper washer as pictured below.



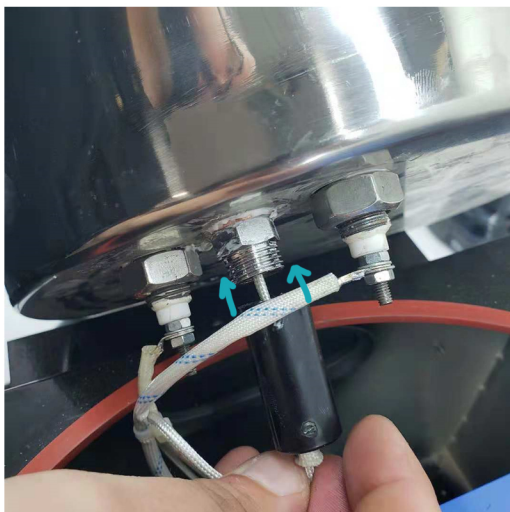
**STEP 6:** Apply silicone to the nut on one side. This side will face the bath inside base to create a leak proof seal.



**STEP 7:** Place the probe cover into the bath with the copper washer covered in silicone pressed up against the underside of the bath. Then screw on the silicone covered nut with the silicone side down to create a leak proof seal.

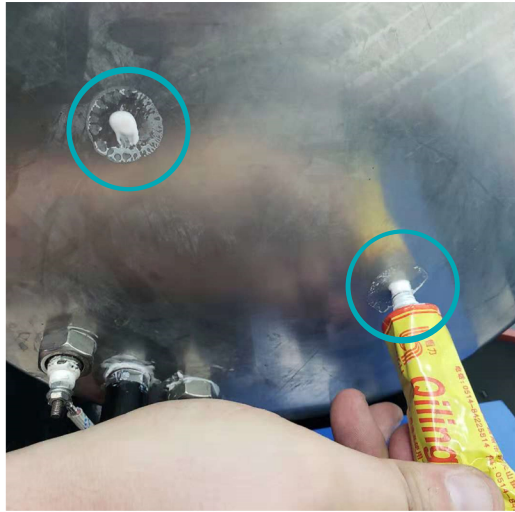


**STEP 8:** Reinstall the probe housing and tighten the set screw.





**STEP 9:** Apply silicone to base of the water bath screw holes.



**STEP 10:** Tighten both screws from the bath inside onto the jack to create a water tight seal. You can then clean up the silicone around the screws.



**YOU'RE ALL DONE!** *LET THE SILICONE DRY BEFORE USE.*



If you have any questions or concerns, please sent us an email or give us a call at  
**734-855-4890** or [sales@usalabequipment.com](mailto:sales@usalabequipment.com)

**THANK YOU!**