

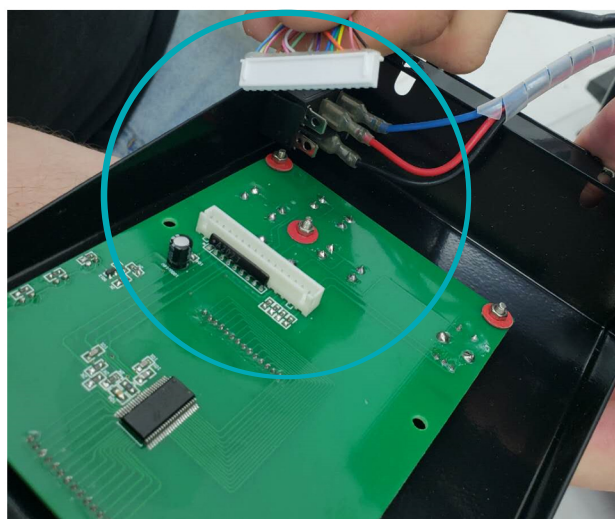


RE-10 SERIES ROTARY EVAPORATOR DISPLAY BOARD REPLACEMENT GUIDE

STEP 1: Remove the two screws at the base of the display housing. Once removed, pull the display housing out bottom first and raise the unit up to bypass screws that are holding the display housing in place.

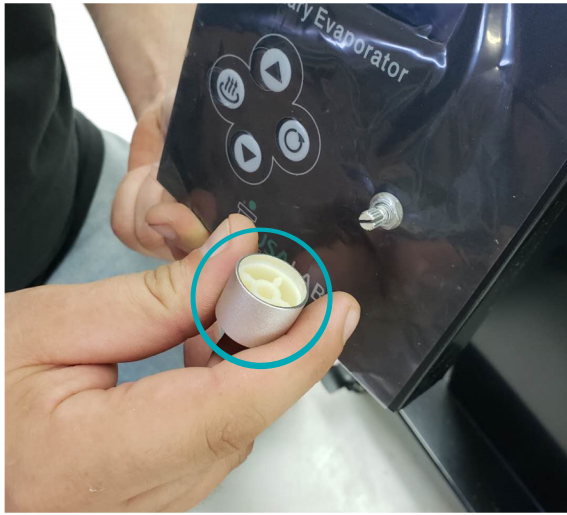


STEP 2: Remove the display board connector from the display board.

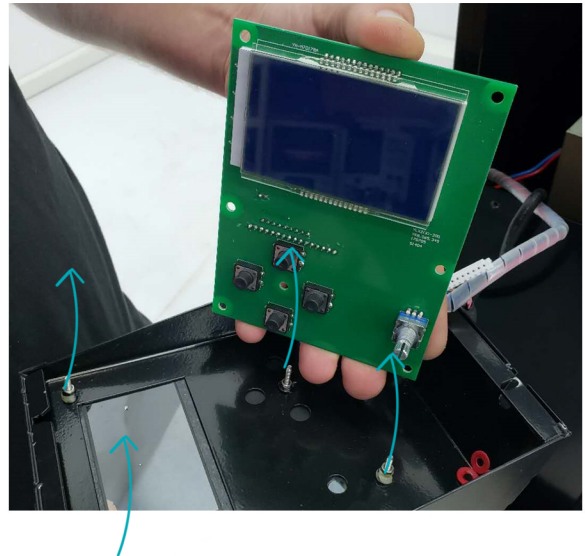
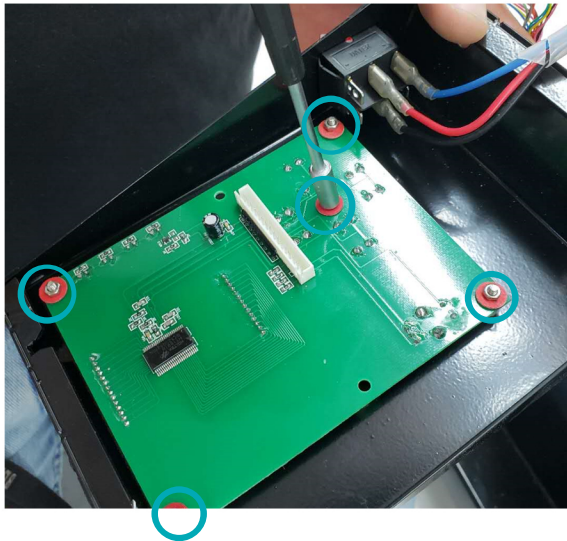


STEP 3: Remove the knob from the face plate. You can now unscrew the knob nut holder.

pg.2



STEP 4: Remove the five nuts holding the display board to the display housing. Once removed you can pull the display board away from the display housing.



You can re-install the new display board in reverse order.



If you have any questions or concerns, please sent us an email or give us a call at
734-855-4890 or sales@usalabequipment.com

THANK YOU!